



SOUTH CENTRAL RAILWAY VIJAYAWADA DIVISION

ACP IN LBH COACHES



TYPES OF COACHES



LHB और ICF कोच
INDIAN RAILWAY

ICF

Integral Coach Factory

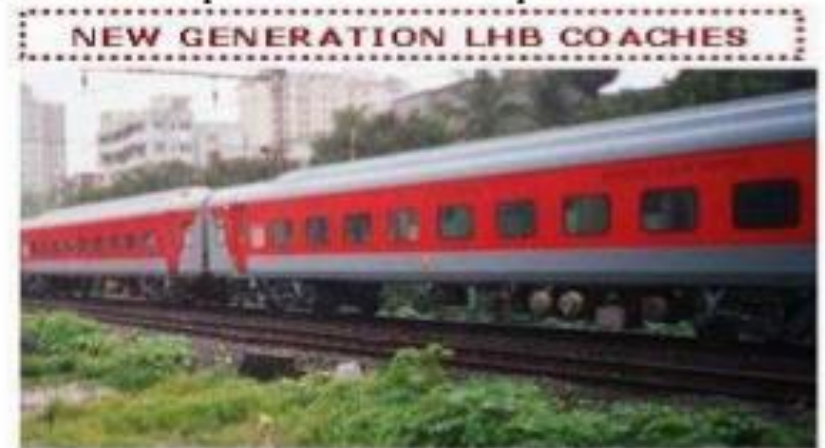
- **ICF:** Integral Coach Factory, Perambur (Chennai) & Rail Coach Factory, Kapurthala



LHB

(Linke Holfmann Busch)

LHB COACHES: LHB body with FIAT bogie (Linke Holfmann Busch – German) Maximum Permissible Speed 160 kmph



ACP IN LBH COACH



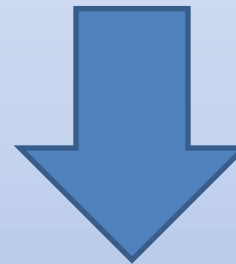
ALARM CHAIN PULLING (ACP)

ACP



Emergency Brake Handle
(Inside the Coach)

Pull Handle



ACP



Normal

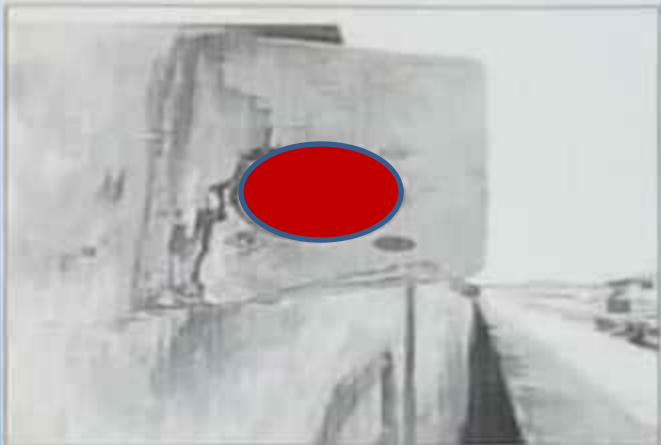


After ACP

Methods of resetting ACP

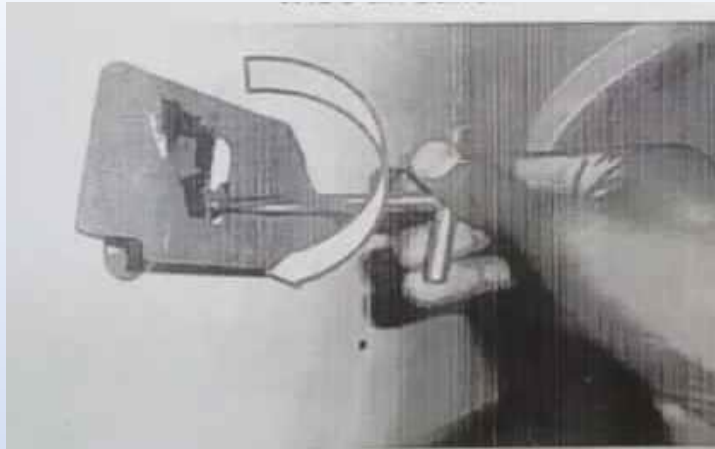


After ACP, the red light in side the cabin glows (**Red**)

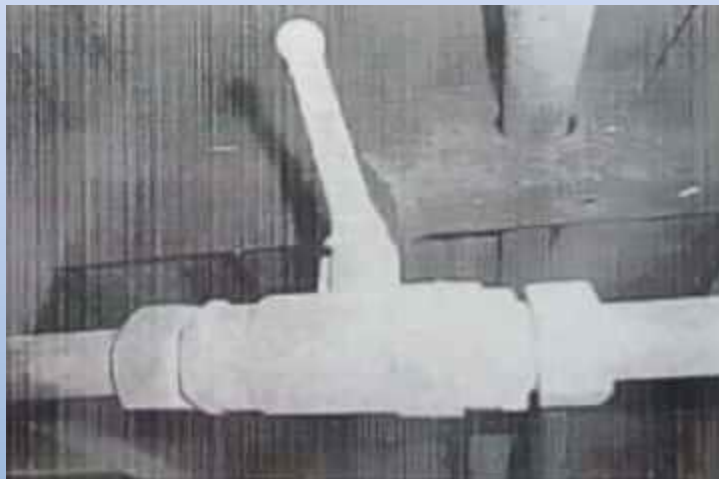


The **Red** Light outside the coach also glows

Methods of resetting ACP



Re-setting is done by rotating the re-setting key in the brake pull box in clock wise direction



If the air leakage does not stop after re-setting, then isolate the PEASD isolation cock under the coach.

Methods of resetting ACP

Watch Video

<https://www.youtube.com/watch?v=RRJ71-ge41c>

or

<https://www.youtube.com/watch?v=fKJ6eXfzteY>

Thank You

